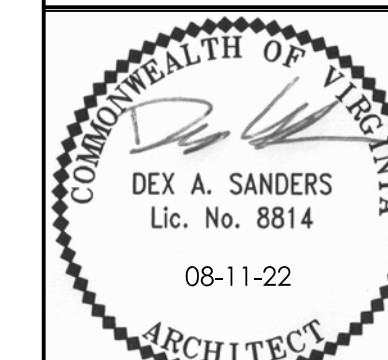




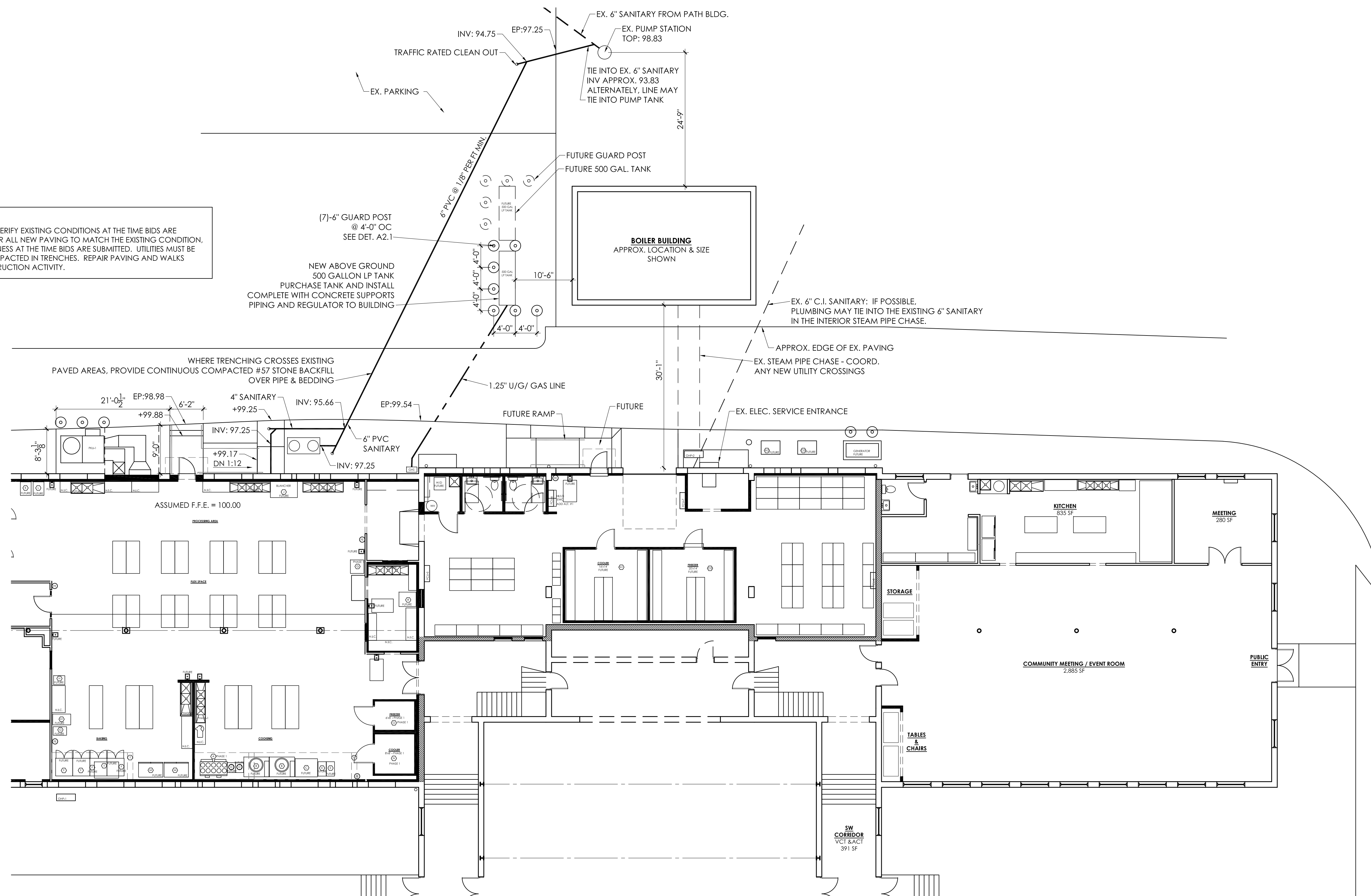
GEORGE WASHINGTON CARVER
FOOD ENTERPRISE CENTER
9432 JAMES MADISON HIGHWAY
RAPIDAN, VA 22733



REVISIONS:
09-01-22

DRAWN: DAS
CHECKED:
SCALE: NOTED
DATE: 08-11-22
PROJECT #: 1624A

ARCHITECTURAL SITE

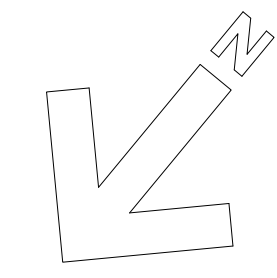


PAVING REPAIR NOTE
CONTRACTOR MUST VERIFY EXISTING CONDITIONS AT THE TIME BIDS ARE SUBMITTED AND REPAIR ALL NEW PAVING TO MATCH THE EXISTING CONDITION. MATERIAL AND THICKNESS AT THE TIME BIDS ARE SUBMITTED. UTILITIES MUST BE FULLY BEDDED & COMPACTED IN TRENCHES. REPAIR PAVING AND WALKS DAMAGED BY CONSTRUCTION ACTIVITY.

PARTIAL ARCHITECTURAL SITE PLAN

SCALE: 3/32" = 1'-0"

NOTE: SITE INFORMATION SHOWN IS BASED SOLELY ON LIMITED ARCHITECTURAL FIELD MEASUREMENTS. NO PHYSICAL SURVEY WAS PERFORMED AND PROPERTY LINES, EASEMENTS & EXISTING UTILITIES ARE NOT LOCATED.



ULTRAPLY TPO REINFORCED CURB CORNER SIZE	SIZE OF FINISHED CURB
7" (178 mm)	12" x 12" (305 x 305 mm)
12" (305 mm)	24" x 24" (610 x 610 mm)
18" (453 mm)	36" x 36" (914 x 914 mm)
24" (603 mm)	48" x 48" (1,219 x 1,219 mm)
30" (762 mm)	60" x 60" (1,524 x 1,524 mm)
36" (914 mm)	72" x 72" (1,829 x 1,829 mm)

NOTE:

- REFER TO FIRESTONE WEBSITE FOR MOST CURRENT INFORMATION.
- REFER TO SIZE CHART TO DETERMINE WHICH OF THE AVAILABLE REINFORCED CORNER FLASHING SIZES TO UTILIZE.
- REFER TO UT-LS-1 OR UT-LS-2 FOR WELD WIDTH.
- BONDING ADHESIVE IS REQUIRED BETWEEN CURB AND REINFORCED CURB CORNERS.
- WHEN REINFORCEMENT OF TPO MEMBRANE IS EXPOSED, REFER TO UT-LS-14 FOR OUT EDGE SEALANT APPLICATION.
- T-JOINT COVERS REQUIRED AT ALL VERTICAL TRANSITIONS ON NON-FACTORY WELDS.
- ULTRAPLY TPO FLASHING (UNSUPPORTED) 4" X 4" MIN. WITH ROUNDED CORNERS MAY BE USED IN LIEU OF T-JOINT COVER.

Labels in diagram: CURB, ULTRAPLY TPO REINFORCED CURB CORNER, ULTRAPLY TPO FIELD MEMBRANE (SEE NOTE #3 AND #5), T-JOINT COVER (SEE NOTE #6 AND #7), T-JOINT COVER (SEE NOTE #7)

Firestone Firestone Building Products	CURB FLASHING WITH ULTRAPLY TPO REINFORCED CURB CORNERS ULTRAPLY™ TPO ACCEPTABLE SYSTEMS ALL	MAXIMUM WARRANTY: 20 Years ISSUE / REVISION DATE: 12/02/2020 NOT TO SCALE	DETAIL NO. UT-C-10
---	--	---	------------------------------